

- Monument Legend**
- ⊗ Indicates 5/8" iron pin found
 - Indicates 5/8" iron pin set
 - ⊠ Indicates Iron Pipe found
 - ▲ Indicates MAG nail found
 - ⊡ Indicates MAG nail set
 - ⊞ Indicates Concrete Monument found
 - ⊞ Indicates Concrete Monument set
 - Indicates Railroad Spike found

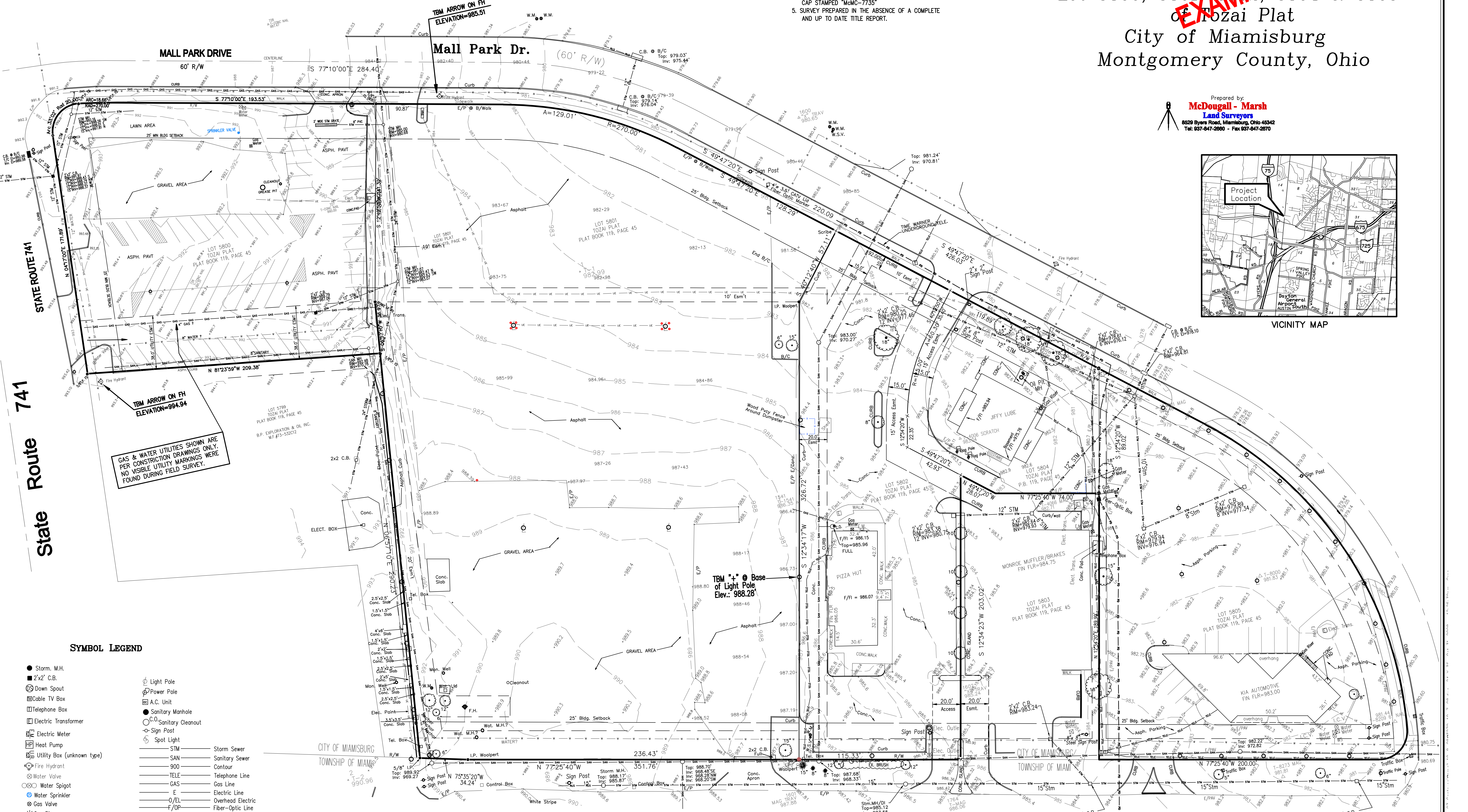
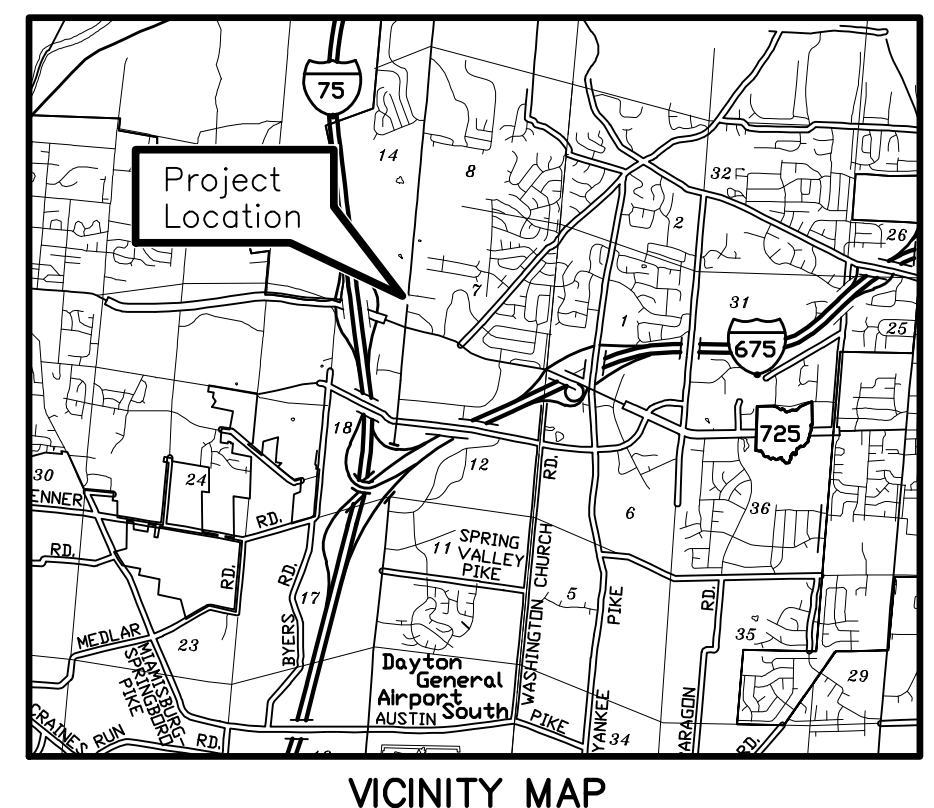


NOTE: Underground utilities as shown herein are approximate locations only from information provided by the various utility companies. Exact locations should be verified in the field prior to excavation by contacting the appropriate utility company.

- SURVEY NOTES:**
1. ALL DEED, SURVEY AND PLAN RECORDS SHOWN ON THIS SURVEY WERE USED IN THE PERFORMANCE OF THIS SURVEY.
 2. LINES OF OCCUPATION (WHERE EXISTING) IN GENERAL AGREE WITH PROPERTY LINES.
 3. ALL MONUMENTATION FOUND IN GOOD CONDITION UNLESS NOTED OTHERWISE.
 4. IRON PINS SET ARE 30" x 5/8" REBAR WITH PLASTIC CAP STAMPED "McC-7735"
 5. SURVEY PREPARED IN THE ABSENCE OF A COMPLETE AND UP TO DATE TITLE REPORT.

Topographical Map of
Castrucci Honda
 Lot 5800, 5801, 5802, 5804 & 5805
 of Tozai Plat
 City of Miamisburg
 Montgomery County, Ohio

Prepared by
McDougall - Marsh
 Land Surveyors
 8529 Byers Road, Miamisburg, Ohio 45342
 Tel: 937-847-2680 - Fax: 937-847-2670



GAS & WATER UTILITIES SHOWN ARE PER CONSTRUCTION DRAWINGS ONLY. NO VISIBLE UTILITY MARKINGS WERE FOUND DURING FIELD SURVEY.

SYMBOL LEGEND

- Storm. M.H.
- 2'x2' C.B.
- ⊙ Down Spout
- ⊞ Cable TV Box
- ⊞ Telephone Box
- ⊞ Electric Transformer
- ⊞ Electric Meter
- ⊞ Heat Pump
- ⊞ Utility Box (unknown type)
- ⊞ Fire Hydrant
- ⊞ Water Valve
- ⊞ Water Spigot
- ⊞ Water Sprinkler
- ⊞ Gas Valve
- ⊞ Gas Riser
- ⊞ Traffic Pole
- ⊞ Traffic Box
- ⊞ Light Pole
- ⊞ Power Pole
- ⊞ A.C. Unit
- ⊞ Sanitary Manhole
- ⊞ Sanitary Cleanout
- ⊞ Sign Post
- ⊞ Spot Light
- STM — Storm Sewer
- SAN — Sanitary Sewer
- 900 Contour
- TELE — Telephone Line
- GAS — Gas Line
- E — Electric Line
- O/EL — Overhead Electric
- F/OP — Fiber-Optic Line
- W — Water
- X — X — FENCE

State Route 725